

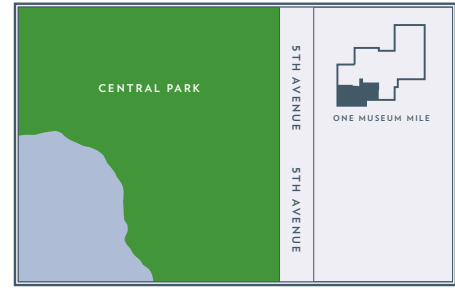
11B

ONE MUSEUM MILE

at 1280 Fifth Avenue

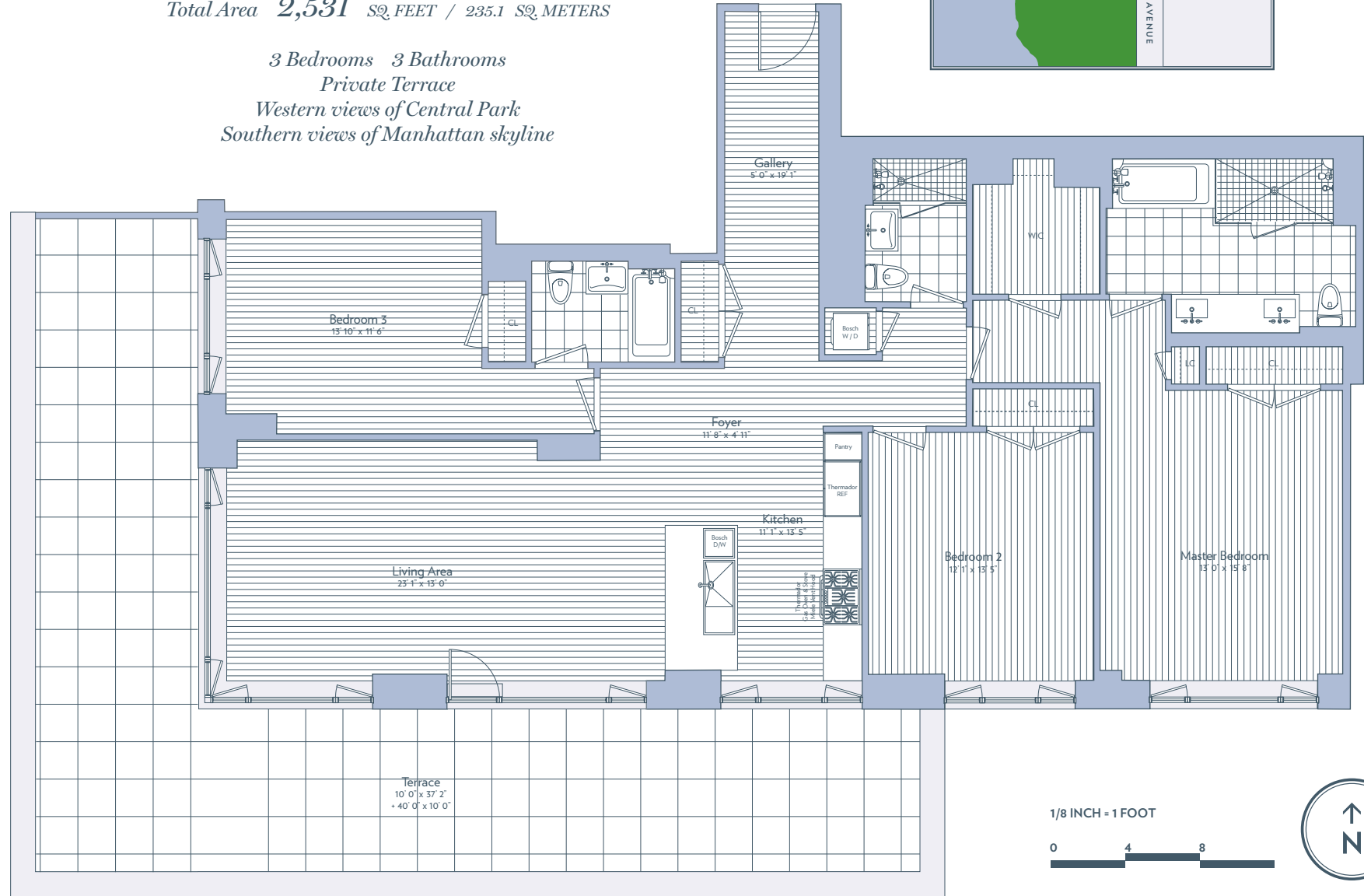
RESIDENCES ON CENTRAL PARK

ANDRE KIKOSKI ROBERT A.M. STERN ARCHITECTS SLCE ARCHITECTS



Total Area **2,531** SQ FEET / 235.1 SQ METERS

3 Bedrooms 3 Bathrooms
Private Terrace
Western views of Central Park
Southern views of Manhattan skyline



1/8 INCH = 1 FOOT



1280 FIFTH AVENUE NEW YORK, NEW YORK 10029
212 996 1280 ONEMUSEUMMILE.COM

Exclusive Sales and Marketing CORE
BRICKMAN

ALL DIMENSIONS ARE APPROXIMATE AND SUBJECT TO NORMAL CONSTRUCTION VARIANCES AND TOLERANCES. SQUARE FOOTAGE EXCEEDS THE USABLE FLOOR AREA AND INCLUDES COLUMNS, MECHANICAL PIPES SHAFTS, SHAFTWAYS, CHASEWAYS AND CONDUITS AND OTHER COMMON ELEMENTS. SPONSOR RESERVES THE RIGHT TO MAKE CHANGES IN ACCORDANCE WITH THE TERMS OF THE OFFERING PLAN. PLANS AND DIMENSIONS MAY CONTAIN MINOR VARIATIONS FROM FLOOR TO FLOOR SEE OFFERING PLAN FOR FULL TERMS. FILE NO. CD08-0486.

